

SEPTEMBER 2021

HOUSE & HOME

LIVE LARGE IN SMALL SPACES

EMMA
REDDINGTON'S
ECLECTIC
STYLE

INSPIRED
HOMES
UNDER
1,000 SQ.FT.

ALL ABOUT
ART WITH
**Sharon
Mimran**

**Brian
McCourt**
MAKES
BUNGALOW
MAGIC

HOT NEW HUE
DECORATING
WITH CLAY

+ RECIPES FROM
THE BAKERY: EMMER
TORONTO'S NEWEST HOT SPOT

SMALL SPACE 1
**830
SQ.FT.**

Small spaces, big style is the common theme of these four stunning homes, where size matters... for all the right reasons. *Text by ROSEMARY POOLE*

SATURATION POINT

AN 1880s TOWNHOUSE IS REMADE WITH EXUBERANT COLOUR AND PATTERN.

Design by JEAN STÉPHANE BEAUCHAMP | *Photography by* MAXIME DESBIENS

Produced by Stacy Beagg / Floor plan illustrations by Madison Pflance / Styling by Nicola Marc



THE TOTAL TRANSFORMATION of Sylvie Renaud's Montreal home started as a small refresh of the tired powder room and bathroom. But once the project began, it seemed like the right time to reconfigure the space and make it more open plan. She hired designer Jean Stéphane Beauchamp, whose work immediately resonated for its use of bold, happy colours. The two are neighbours, sharing a mutual appreciation for the European character of Le Plateau-Mont-Royal.

They began by removing the columns in the combined living-dining room. Then, the wall that enclosed the kitchen was taken down, making the space feel larger and setting the stage for a fresh palette. For the powder room, Sylvie produced a swatch of Thibaut wallpaper she'd been holding on to for years. "It's particularly bold, so I only used it sparingly," says Jean Stéphane, "but it guided all the other colours. The sofa became navy, the powder room, pink. It even influenced the backsplash in the kitchen."

TOP RIGHT: Jean Stéphane chose furniture with rounded corners to improve flow in the narrow living area. **Sectional**, EQ3; **armchair**, Knoll; **coffee table**, **side tables**, Beige; **rug**, Tapis H. Lalonde & Frère. **LEFT:** Sylvie Renaud in her cheerful home. **Wall colour**, Blackened (2011), **staircase riser colour**, Down Pipe (26), Farrow & Ball.



ABOVE: The stair risers were painted a charcoal hue to highlight their elegant form. **Art** by Carole Arbic, Arteria Gallery.

TOP LEFT: A painting by Québécoise artist Louise Robert “captures the essence of the house,” says Sylvie. **Pendant**, Luminaire Authentik; **dining table**, Meubles Re-No; **dining chairs**, Calligaris.

MIDDLE LEFT: Drawers in the island hold Sylvie’s collection of vintage silverware.

BOTTOM LEFT: A multitasking corner of the kitchen incorporates the fridge, pullout pantry, laundry and a coffee station. **Fridge**, Fisher & Paykel.

OPPOSITE: “I decided that I wasn’t going to be conservative in my colour choices,” says Sylvie of her emerald green and robin’s-egg blue kitchen. **Cabinets, counters**, Luxart; **floor and wall tile**, Centura Tile.

Now open to the living–dining room, the kitchen has a colourful presence. For the lower cabinets, the designer chose white oak in a chevron pattern and refinished the existing hardwood floors to match. On the left side, full-height cupboards conceal a pullout pantry and stacked washer and dryer. The existing bronze-black stair railing inspired the rounded, tubular steel of the kitchen’s open shelf and “creates a continuous architectural line,” says Jean Stéphane.

The finished spaces are vibrant, space-efficient and now, at long last, tailored to its patient homeowner. “It was a pleasure, that year of designing and talking about the rooms,” says Sylvie of her forever home, adding, “If there’s a point where I can’t get up the stairs, I’ll put in an elevator!”



*“I decided that
I wasn’t going to
be conservative
in my colour
choices”*

— Sylvie Renaud



ABOVE AND RIGHT: A single wall of terrazzo stone forms the back of the shower. **Tile, shower fixtures, Ramacieri Soligo; sconce, Luminaire Authentik; art, John Derian.**

OPPOSITE, TOP LEFT: Layers of soft pink and dark blue create a restful atmosphere in the bedroom. **Bed frame, nightstand, West Elm.**

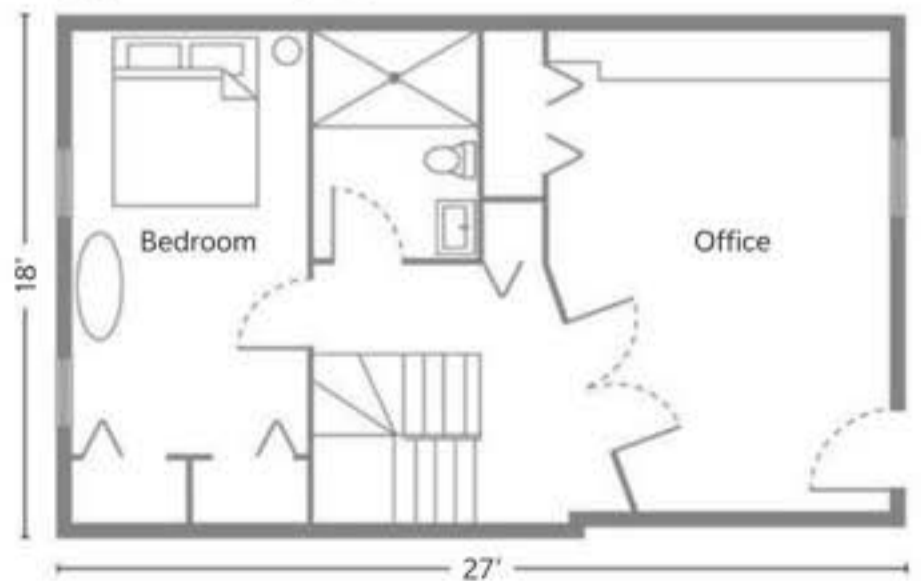
OPPOSITE, BOTTOM LEFT: This floral wallpaper inspired the colour scheme used throughout. **Honshu wallpaper, Thibaut; faucet, Ramacieri Soligo.**

OPPOSITE, BOTTOM RIGHT: The bedroom walls are painted in Farrow & Ball's Hague Blue. **Dresser, West Elm.**

First Floor



Second Floor





HOME TRUTHS

HOW DO YOU MAKE SMALL-SPACE LIVING COMFORTABLE? "By opening up the space and dividing it with furniture."

HOW MANY PEOPLE CAN YOU HOST FOR A DINNER PARTY? "Ten. I like to host at least one formal dinner a year."

WHAT'S YOUR BIGGEST SANITY-SAVER? "My neighbourhood — I can walk everywhere."

IF YOU COULD ADD ONE THING TO YOUR SPACE, WHAT WOULD IT BE? "I wish I had room in the living area for my Italian-made rolltop desk."

WHOSE WORK DO YOU FOLLOW? "Jean Stéphane's, of course, as well as Montreal architecture firms La Shed and Naturehumaine."

